

**Protect Your Business' Most
Valuable Asset: Information.**

LEGAL GRIDLOCK

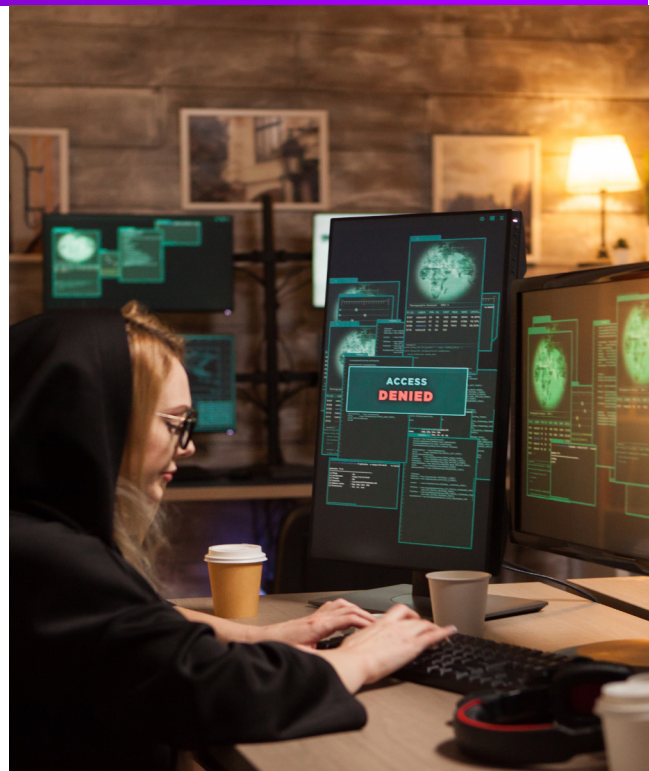
Specialized in data protection for
high-confidentiality environments.

**Enterprise-Grade Cybersecurity & DLP
Solutions with Microsoft 365.**



Your Data is Your Most Valuable Asset and Your Biggest Risk.

- **Targeted Attacks:** Organizations holding sensitive data are high-value targets for cybercriminals seeking leverage or financial gain.
- **Insider Threats:** Risk of intentional or accidental data leakage by employees.
- **Remote Work:** Hybrid work models have significantly increased the risk of data exposure outside the office.
- **Impact:** A single breach can damage reputation, client trust, and operational continuity.



Who We Are

We are a cybersecurity and compliance company specialized in protecting highly sensitive information for organizations that manage confidential and high-value data.



Microsoft 365 Security & Compliance Specialization.

The Value of Robust Security.

- **Control:** Full oversight on who can access, share, or move your sensitive information.
- **Compliance Automation:** Compliance becomes a built-in automation rather than a manual burden.
- **Risk Reduction:** Drastically reduces human error (the #1 cause of data leaks) and prevents data exfiltration.
- **Trust:** Demonstrates a strong security posture to clients and corporate partners.





Protection for Business Workflows



1. Data Loss Prevention (DLP):

Prevents unauthorized sharing of contracts, financial records, and emails. Automated alerts for risky actions tailored to your business needs.



2. Compliance Automation and Sensitivity Labels:

Classifies documents automatically and applies encryption. Compliance becomes a built-in automation rather than a manual burden, providing necessary audit trails.



3. Endpoint Security:

Protects all devices used by staff. Provides visibility across laptops, phones, and remote work environments to prevent malware and compromised accounts.

Our Implementation Framework



1. Assessment of Data Flows.



2. Policy Design for Use Cases.



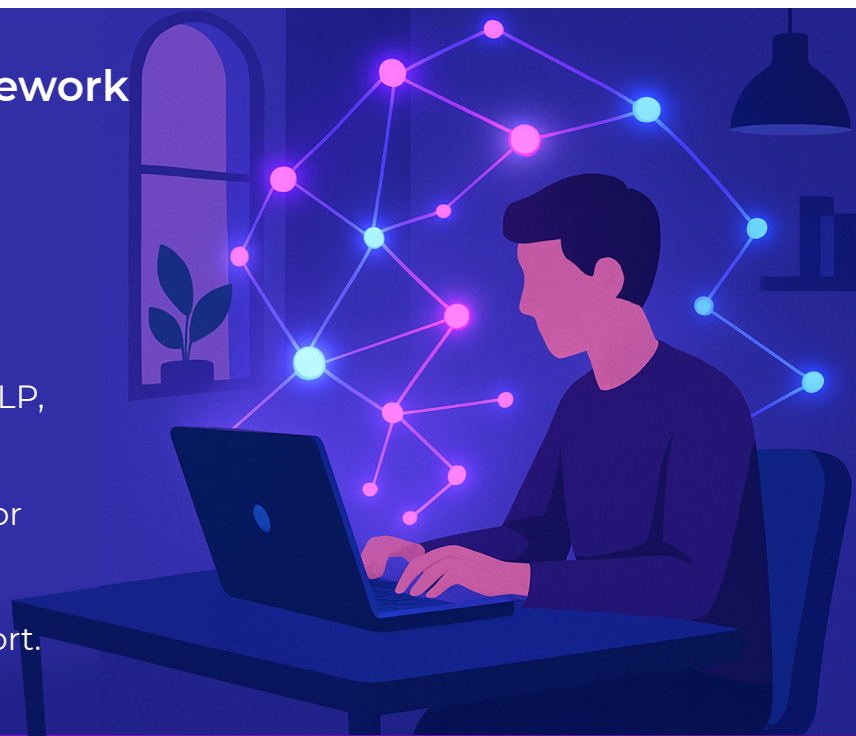
3. Technical Configuration of DLP, Sensitivity Labels & Defender.



4. Staff Enablement (Training for partners and support teams).



5. Monitoring & Ongoing Support.





Let's Strengthen Your Security.



LEGAL GRIDLOCK

**Schedule a consultation to evaluate
your current compliance posture and
secure your data infrastructure.**

Legalgridlock.com

    [/legalgridlock](https://www.facebook.com/legalgridlock)